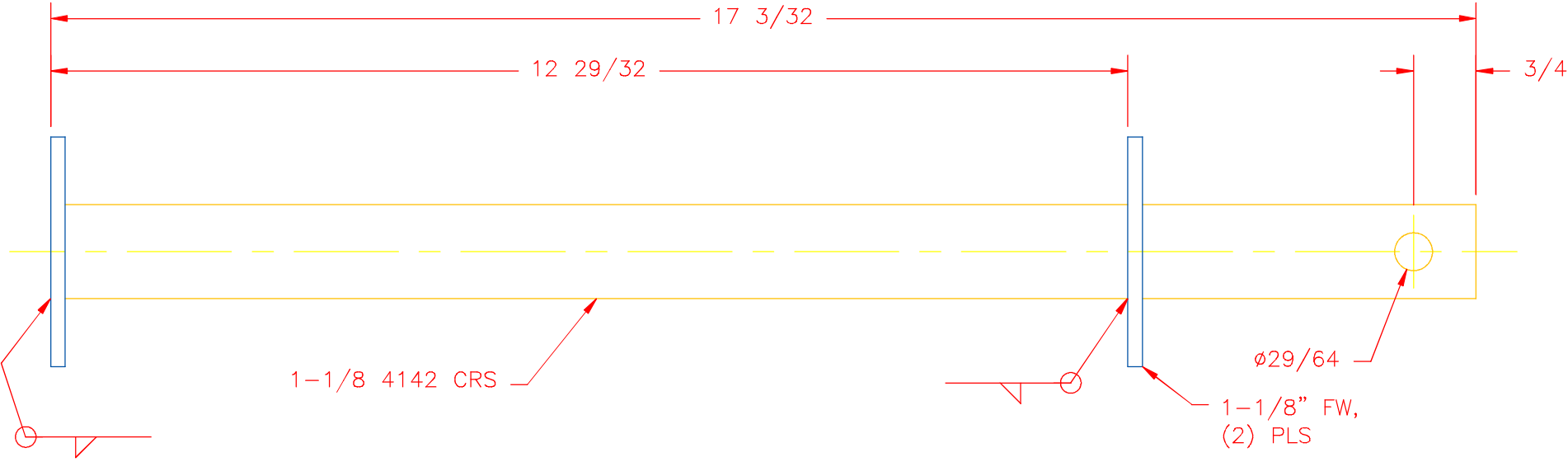


This drawing contains confidential proprietary information of Triple C, Inc. and is subject to return upon request. The furnishing of this drawing is not to be construed as the grant of any license, express or implied, to manufacture, have manufactured, use or sell the structures shown hereon.



**TRIPLE C**  
INC.

P.O. BOX 248, SABETHA, KS 66534  
(785) 284-3674 FAX (785) 284-3931

TOLERANCES Unless otherwise specified XX .010 XXX .005 XXXX .0005 X/X 1/32 ANGLE 0°30'	SHEET __OF__	SCALE: 1:2	DRAWN BY: CHRIS ABERLE X
	TITLE: LIFT PIN, HF, 100 SERIES		

ASSEMBLY NUMBER: HF12-13	DRAWING NUMBER: 30-1205	REV
-----------------------------	----------------------------	-----